

MOVING TECHNOLOGIES



MAXIPARTNER[®] - MX

COLUMN MXC



FIXED OVERHEAD MXF



OVERHEAD TROLLEY MOUNTED MXS

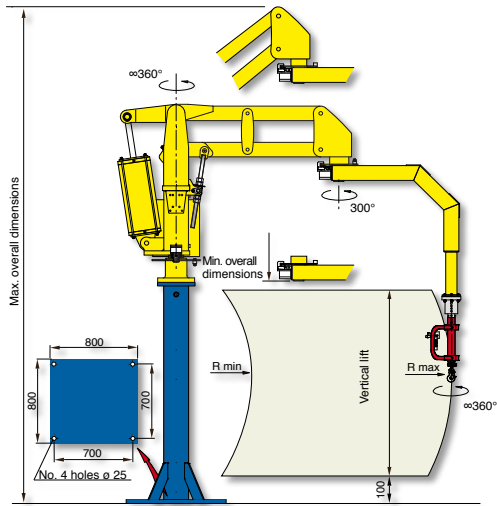


 **dalmec**
Industrial Manipulators

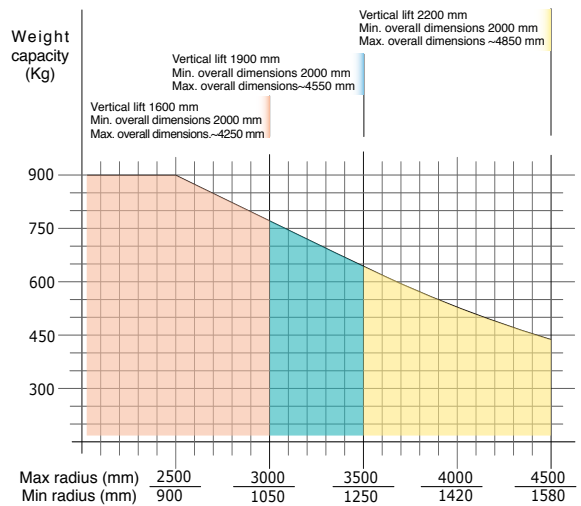
Pneumatic Manipulator MAXIPARTNER MX with articulated arms

MAXIPARTNER MAX, designed and realized particularly for difficult handlings, meets the requirement to move heavy and off-set loads, in any direction, allowing the operator to work with the minimum effort in good ergonomic and safety conditions. Its slim and strong structure eliminates the "drifting" effect.

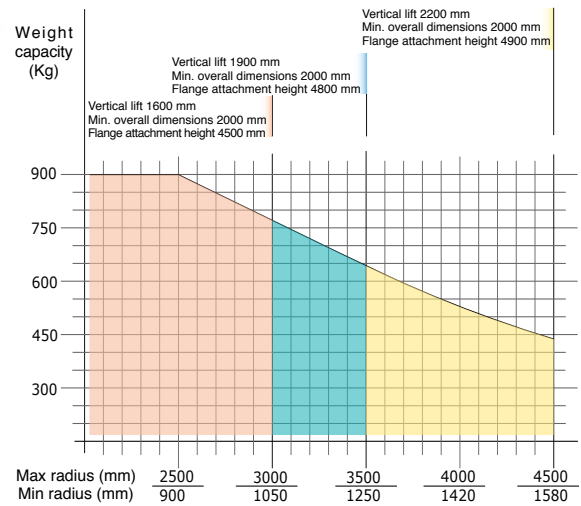
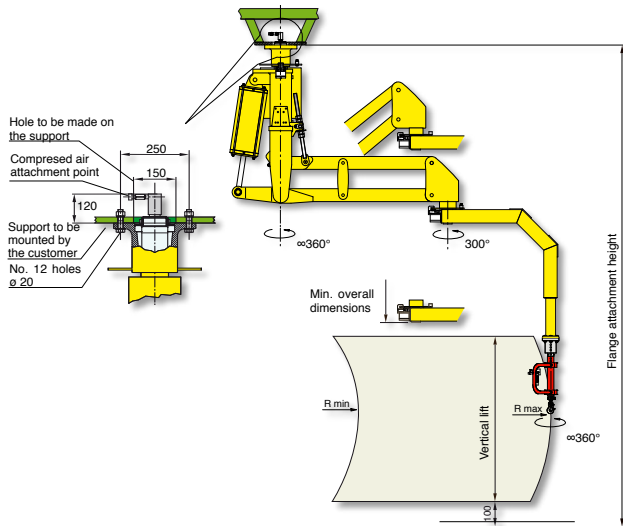
Maxipartner column mounted - MXC



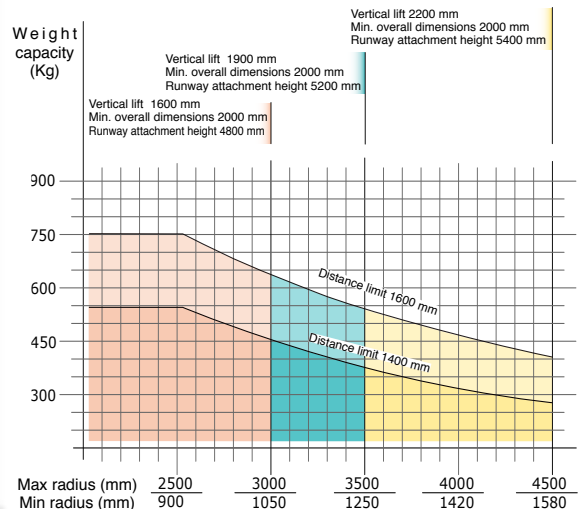
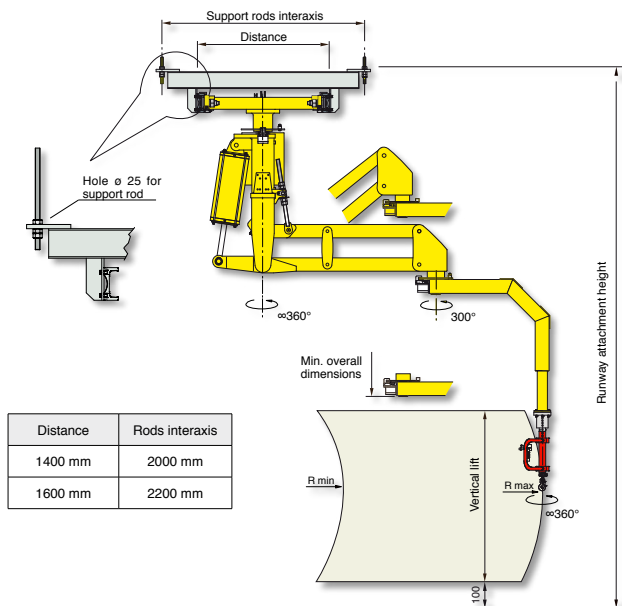
Structural versions: column mounted on fixed base-plate, autostable base-plate of our supply properly dimensioned or with autostable motorised trolley that translates on a simple profile track on the floor.



Maxipartner overhead mounted - MXF



Maxipartner overhead trolley mounted - MXS



Air supply: Dry and oil-free compressed air min constant 0.7÷0.8 MPa