

# MOVING TECHNOLOGIES



## PARTNER<sup>®</sup> - PM

COLUMN PMC



FIXED OVERHEAD PMF



OVERHEAD TROLLEY MOUNTED PMS



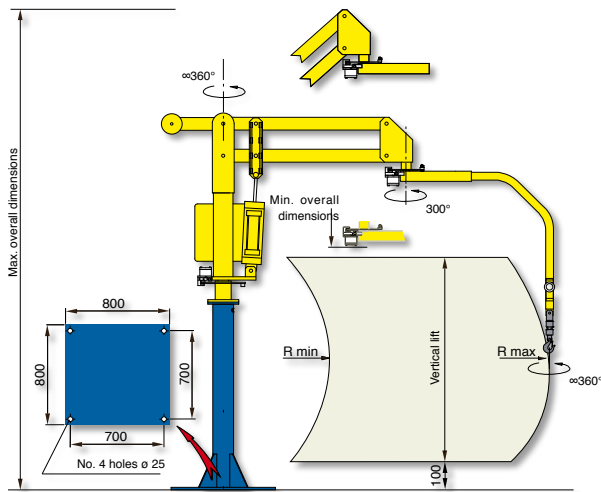
 **dalmec**  
Industrial Manipulators

### **Pneumatic Manipulator PARTNER PM with articulated arms**

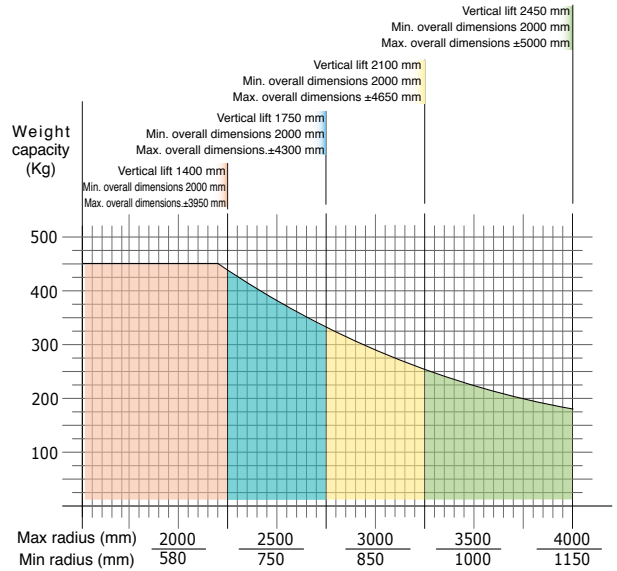
PARTNER PM equipped with special gripping tools, is particularly suitable to manually handle, in a weightless condition, center and off-set loads in any direction. Thus enables the operator to work quickly, with precision and without fatigue, in excellent ergonomic and safety conditions. Its versatile structure also allows to fit in any working environment.

# PARTNER® - PM

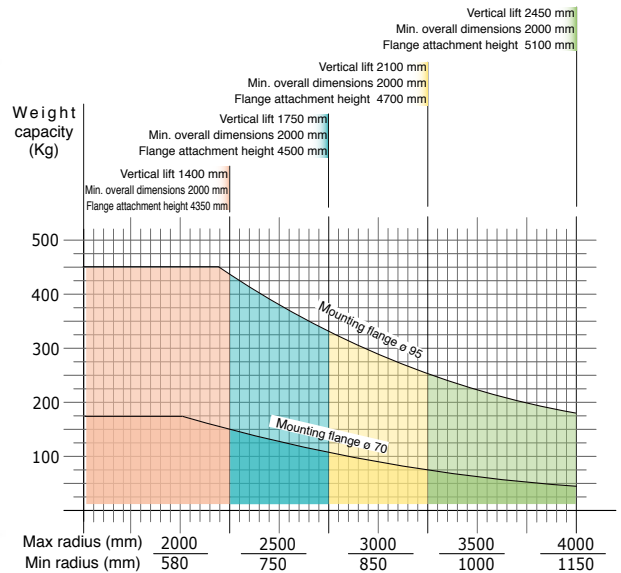
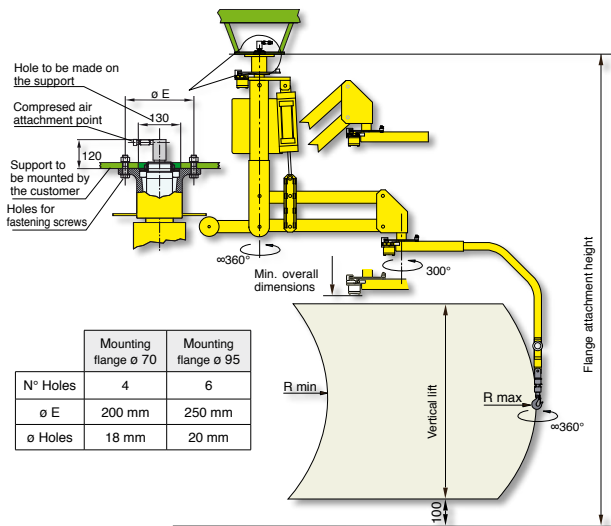
## Maxipartner column mounted - PMC



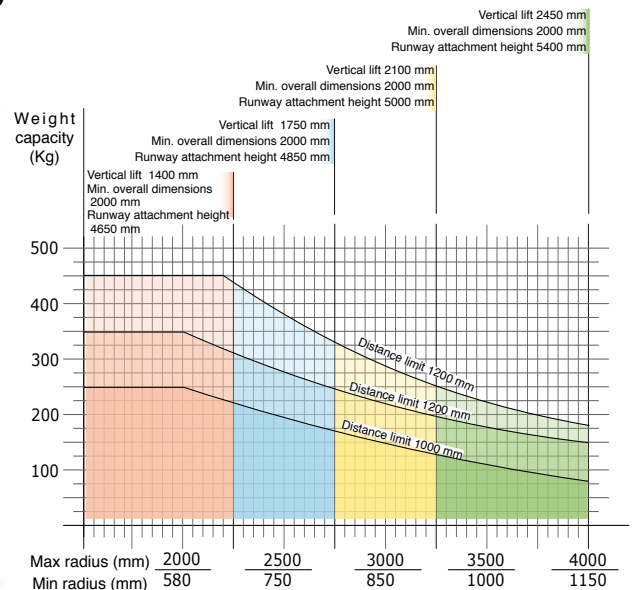
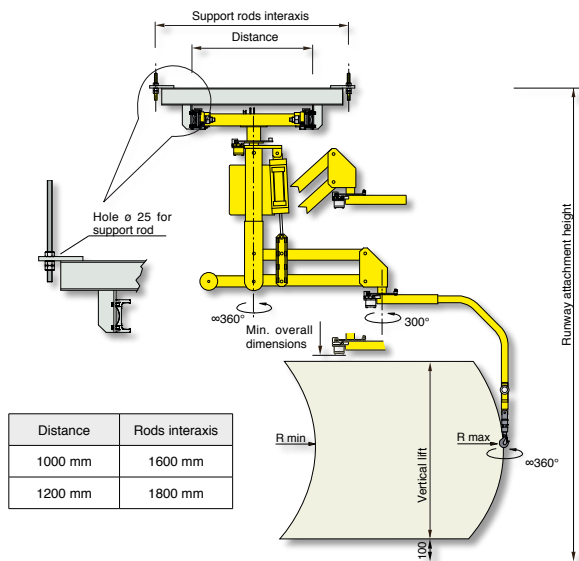
Structural versions: column mounted on fixed base-plate, autostable base-plate of our supply properly dimensioned or with autostable motorised trolley that translates on a simple profile track on the floor.



## Partner overhead mounted - PMF



## Maxipartner overhead trolley mounted - PMS



Air supply: Dry and oil-free compressed air min constant 0.7÷0.8 MPa